

## GEOPHYSICAL SOLUTIONS FOR MINERAL EXPLORATION

[gsmgeophysics.com](http://gsmgeophysics.com)



## WHO ARE WE?

GSM is a Brazilian company, based at Rio de Janeiro, specializes in geophysical solutions to mineral industry. Our consultants have an extensive experience in various types of commodities and in the mineral provinces of Brazil. We believe that the best way to serve our customers is ensuring the excellence in everything we do and in every product we deliver, always seeking to improve our processes and methods, committed to the ethical and professional confidence. Our mission is to provide geophysical services to the mining industry with products that meet the need of the customer and with international quality.

## SERVICES

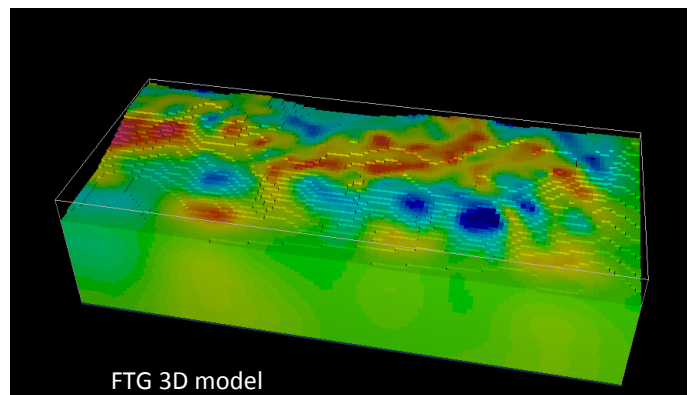
GSM offers a wide range of specialized geophysical services applied to mineral exploration.

We work in all phases of geophysical exploration for mining, working from the planning and supervision of surveys until the inversion of geophysical data and integration with drillholes data, geology and geochemistry.

We are able to work with various geophysical methods and different scale of prospecting, Greenfield, Browfield, Near Mine, seeking to meet the needs of each client. Below you can see some of our services, for more details about our specialized services contact us.

- Survey Plan and QC of Geophysical Survey (Airborne and Ground);
- Processing and reprocessing of geophysical data (Airborne and Ground);

- Geological/Geophysical interpretation of airborne data with focus in mineral exploration;
- *Targeting generation from the integration of geological, geochemistry and geophysical data; Near mine interpretation* para verificar a continuidade do depósito;
- Interpretation and modeling of borehole data (BHMAG, BHEM e BHGRAV);
- 2D e 3D modeling (*constrained e unconstrained*) of potential data;



Contact and Informations: [www.gsmgeophysics.com](http://www.gsmgeophysics.com) — [gsm@gsmgeophysics.com](mailto:gsm@gsmgeophysics.com) - +55 021 30855723

